

Adult Social Care - Package Activity Information

Learning Disabilities (LD)

	April 2009	July 2009	Oct 2009	Nov 2009	Jan 2010	Feb 2010
Residential	112	115	105	102	101	101
Direct Payment	30	17	17	17	16	16
Supported Accommodation	51	50	49	48	47	47
Adult Placement	12	16	16	15	15	15
Personal Budget	15	37	38	40	51	53
Total	220	235	225	222	230	232

Mental Health (MH)

	April 2009	July 2009	Oct 2009	Nov 2009	Jan 2010	Feb 2010
Residential	237	237	226	216	215	208
Direct Payment	7	5	4	4	4	4
Supported Accommodation	16	16	16	16	17	17
Adult Placement	0	0	0	0	0	
Personal Budget	0	1	4	7	5	7
Total	260	259	250	243	241	236

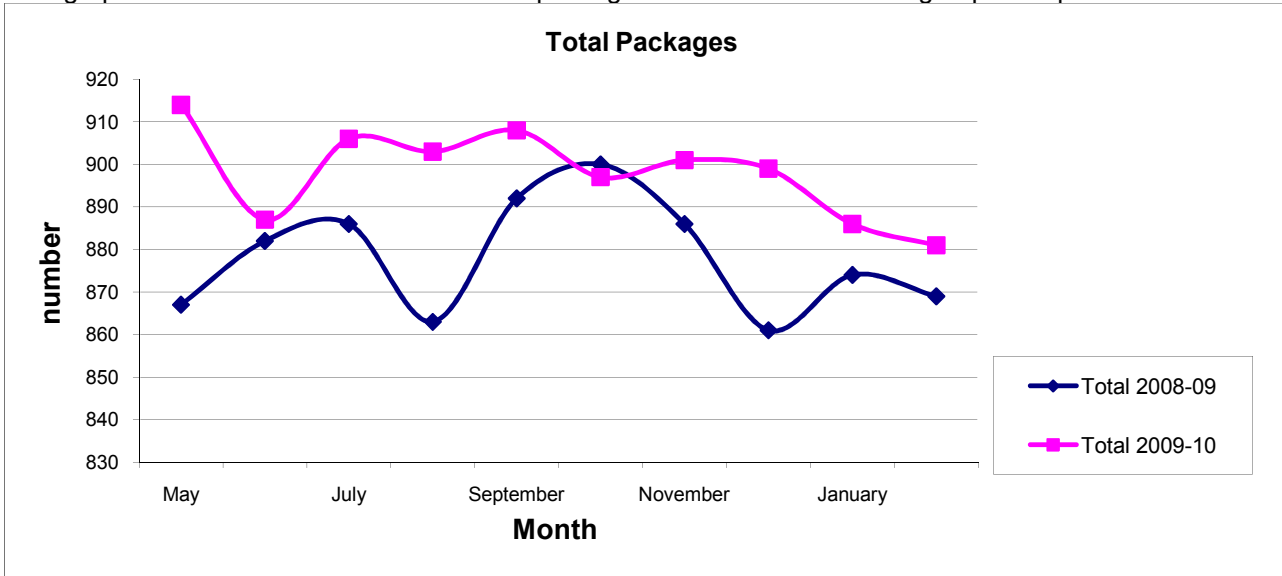
Older People (OP)

	April 2009	July 2009	Oct 2009	Nov 2009	Jan 2010	Feb 2010
Residential	260	269	267	278	257	252
Direct Payment	22	13	19	11	11	11
Supported Accommodation	7	7	6	6	5	5
Adult Placement	0	0	0	0	0	
Personal Budget	0	18	19	27	26	26
Total	289	307	311	322	299	294

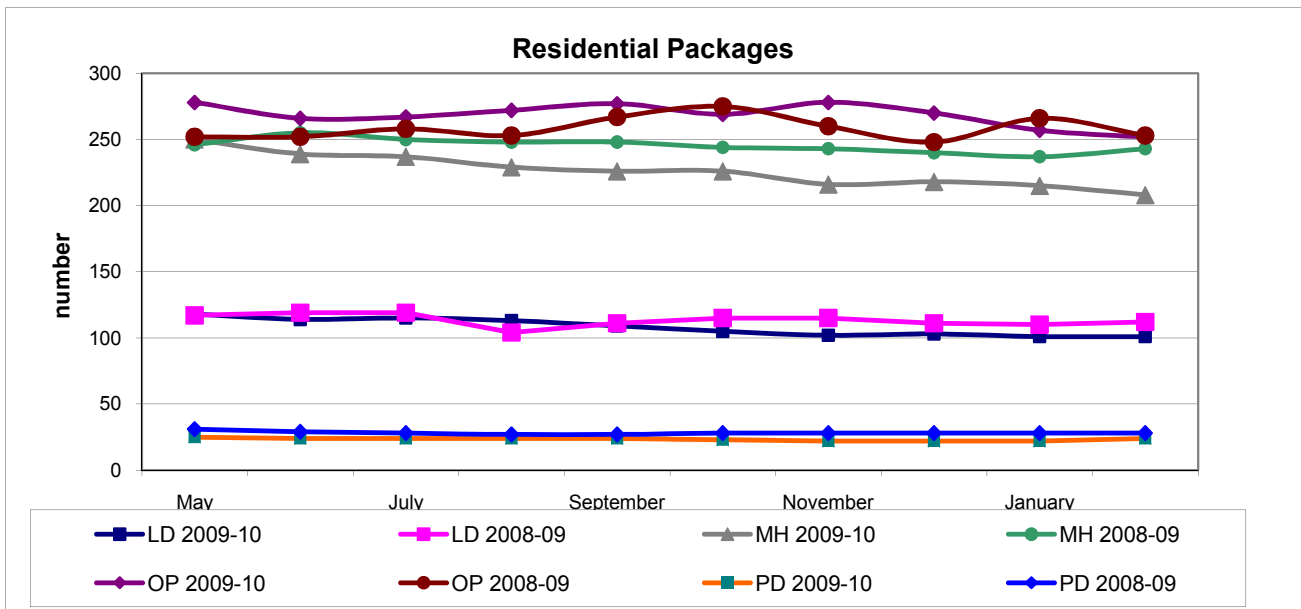
Physical Disabilities (PD)

	April 2009	July 2009	Oct 2009	Nov 2009	Jan 2010	Feb 2010
Residential	28	24	23	22	22	24
Direct Payment	65	49	51	51	49	49
Supported Accommodation	7	5	6	6	6	6
Adult Placement	0	0	0	0	0	
Personal Budget	2	23	35	35	39	40
Total	102	101	115	114	116	119

The graph below shows the Total number of packages for 2009/10 across all groups compared with 2008/09



The graph below shows the trend in Residential packages for 2009/10 compared with 2008/09



The graph below shows the trend in Personal Budget for 2009/10

